

## LAMPIRAN 3 Hasil Uji Statistik dengan SPSS 17

### 1. Uji Normalitas Kelengkapan

FREQUENCIES VARIABLES=kelengkapan /STATISTICS=STDDEV VARIANCE RANGE MINIMUM  
MAXIMUM MEAN MEDIAN /HISTOGRAM NORMAL /ORDER=ANALYSIS.

#### Frequencies

[DataSet0]

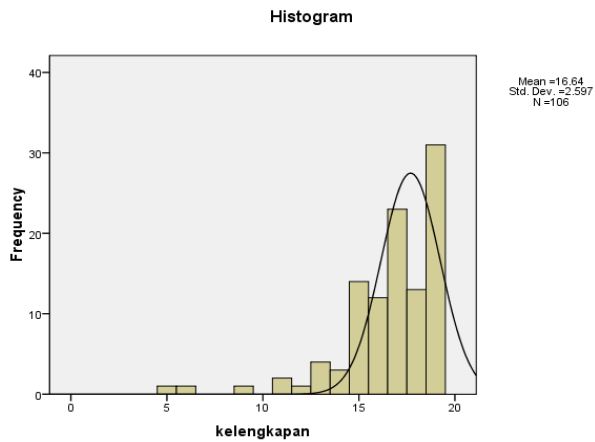
#### Statistics

kelengkapan

N	Valid	106
	Missing	0
	Mean	16.64
	Median	17.00
	Std. Deviation	2.597
	Variance	6.746
	Range	14
	Minimum	5
	Maximum	19

#### kelengkapan

	Frequency	Percent	Valid Percent	Cumulative Percent
Valid 5	1	.9	.9	.9
6	1	.9	.9	1.9
9	1	.9	.9	2.8
11	2	1.9	1.9	4.7
12	1	.9	.9	5.7
13	4	3.8	3.8	9.4
14	3	2.8	2.8	12.3
15	14	13.2	13.2	25.5
16	12	11.3	11.3	36.8
17	23	21.7	21.7	58.5
18	13	12.3	12.3	70.8
19	31	29.2	29.2	100.0
Total	106	100.0	100.0	



EXAMINE VARIABLES=kelengkapan /PLOT BOXPLOT STEMLEAF NPLOT /COMPARE GROUP /STATISTICS DESCRIPTIVES /CINTERVAL 95 /MISSING LISTWISE /NOTOTAL.

## Explore

[DataSet0]

### Case Processing Summary

	Cases					
	Valid		Missing		Total	
	N	Percent	N	Percent	N	Percent
kelengkapan	106	100.0%	0	.0%	106	100.0%

### Descriptives

		Statistic	Std. Error
kelengkapan	Mean	16.64	.252
95% Confidence Interval for Mean	Lower Bound	16.14	
	Upper Bound	17.14	
	5% Trimmed Mean	16.96	
	Median	17.00	
	Variance	6.746	
	Std. Deviation	2.597	
	Minimum	5	
	Maximum	19	
	Range	14	
	Interquartile Range	4	
	Skewness	-1.973	.235
	Kurtosis	5.563	.465

### Tests of Normality

	Kolmogorov-Smirnov <sup>a</sup>			Shapiro-Wilk		
	Statistic	df	Sig.	Statistic	df	Sig.
kelengkapan	.187	106	.000	.799	106	.000

a. Lilliefors Significance Correction

## 2. Uji Normalitas Umur

FREQUENCIES VARIABLES=umur /STATISTICS=STDDEV VARIANCE RANGE MINIMUM MAXIMUM MEAN MEDIAN /HISTOGRAM NORMAL /ORDER=ANALYSIS.

### Frequencies

[DataSet0]

#### Statistics

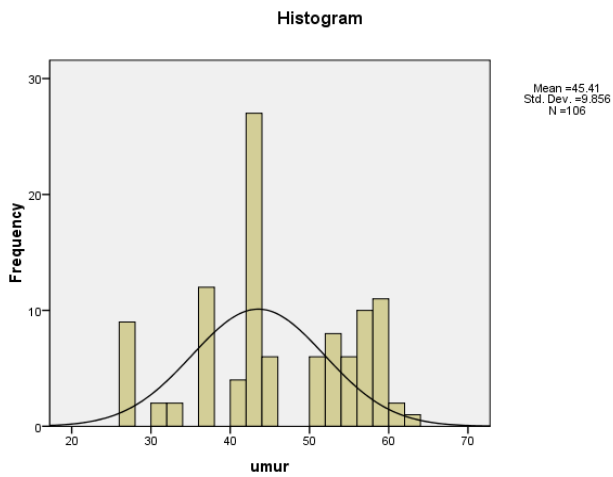
umur

N	Valid	106
	Missing	0
	Mean	45.41
	Median	43.00
	Std. Deviation	9.856
	Variance	97.139
	Range	35
	Minimum	27
	Maximum	62

#### umur

	Frequency	Percent	Valid Percent	Cumulative Percent
Valid 27	9	8.5	8.5	8.5
30	2	1.9	1.9	10.4
33	2	1.9	1.9	12.3
36	11	10.4	10.4	22.6
37	1	.9	.9	23.6
41	4	3.8	3.8	27.4
42	23	21.7	21.7	49.1
43	4	3.8	3.8	52.8
44	2	1.9	1.9	54.7
45	4	3.8	3.8	58.5
50	4	3.8	3.8	62.3

51	2	1.9	1.9	64.2
52	8	7.5	7.5	71.7
54	2	1.9	1.9	73.6
55	4	3.8	3.8	77.4
56	5	4.7	4.7	82.1
57	5	4.7	4.7	86.8
58	1	.9	.9	87.7
59	10	9.4	9.4	97.2
60	2	1.9	1.9	99.1
62	1	.9	.9	100.0
Total	106	100.0	100.0	



EXAMINE VARIABLES=umur /PLOT BOXPLOT STEMLEAF HISTOGRAM NPLOT /COMPARE GROUP /STATISTICS DESCRIPTIVES /CINTERVAL 95 /MISSING LISTWISE /NOTOTAL.

**Explore**

[DataSet0]

**Case Processing Summary**

	Cases					
	Valid		Missing		Total	
	N	Percent	N	Percent	N	Percent
umur	106	100.0%	0	.0%	106	100.0%

### Descriptives

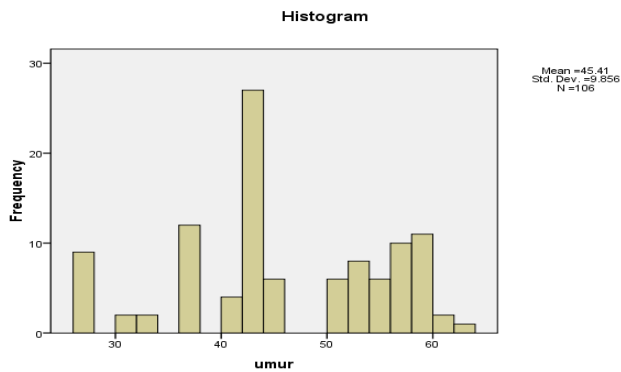
		Statistic	Std. Error	
umur	Mean	45.41	.957	
	95% Confidence Interval for Mean	Lower Bound	43.51	
		Upper Bound	47.30	
		5% Trimmed Mean	45.62	
	Median	43.00		
	Variance	97.139		
	Std. Deviation	9.856		
	Minimum	27		
	Maximum	62		
	Range	35		
	Interquartile Range	14		
	Skewness	-.191	.235	
	Kurtosis	-.909	.465	

### Tests of Normality

	Kolmogorov-Smirnov <sup>a</sup>			Shapiro-Wilk		
	Statistic	df	Sig.	Statistic	df	Sig.
umur	.126	106	.000	.933	106	.000

a. Lilliefors Significance Correction

**umur**



### 3. Univariat Kelengkapan

#### Frequencies

##### Statistics

Kelengkapan

N	Valid	106
	Missing	0

##### Kelengkapan

	Frequency	Percent	Valid Percent	Cumulative Percent
Valid > 89.5 % Lengkap	67	63.2	63.2	63.2
< 89.5% Tidak Lengkap	39	36.8	36.8	100.0
Total	106	100.0	100.0	

### 4. Univariat Umur

#### Frequencies

##### Statistics

Umur

N	Valid	106
	Missing	0

##### Umur

	Frequency	Percent	Valid Percent	Cumulative Percent
Valid > 43 tahun	54	50.9	50.9	50.9
< 43 Tahun	52	49.1	49.1	100.0
Total	106	100.0	100.0	

### 5. Univariat Jenis Keahlian

#### Frequencies

##### Statistics

jeniskeahlian

N	Valid	106
	Missing	0

**jeniskeahlian**

		Frequency	Percent	Valid Percent	Cumulative Percent
Valid	spesialis	70	66.0	66.0	66.0
	umum	36	34.0	34.0	100.0
	Total	106	100.0	100.0	

## 6. Univariat Masa Kerja

### Frequencies

**Statistics**

masa\_kerja

N	Valid	106
	Missing	0

**masa\_kerja**

		Frequency	Percent	Valid Percent	Cumulative Percent
Valid	> 3 tahun	64	60.4	60.4	60.4
	< 3 tahun	42	39.6	39.6	100.0
	Total	106	100.0	100.0	

## 7. Univariat Status Kepagawaian

### Frequencies

**Statistics**

statuskepegawaian

N	Valid	106
	Missing	0

**statuskepegawaian**

		Frequency	Percent	Valid Percent	Cumulative Percent
Valid	PNS/Peg tetap	64	60.4	60.4	60.4
	Pegawai Tidak tetap	42	39.6	39.6	100.0
	Total	106	100.0	100.0	

## 8. Bivariat Umur

### Crosstabs

Case Processing Summary

	Cases					
	Valid		Missing		Total	
	N	Percent	N	Percent	N	Percent
Umur * Kelengkapan_resume	106	100.0%	0	.0%	106	100.0%

Umur \* Kelengkapan\_resume Crosstabulation

			Kelengkapan_resume		
			lengkap	tidak lengkap	Total
Umur	>43 tahun	Count	38	16	54
		% within Umur	70.4%	29.6%	100.0%
	<43 tahun	Count	29	23	52
		% within Umur	55.8%	44.2%	100.0%
Total		Count	67	39	106
		% within Umur	63.2%	36.8%	100.0%

Chi-Square Tests

	Value	df	Asymp. Sig. (2-sided)	Exact Sig. (2-sided)	Exact Sig. (1-sided)
Pearson Chi-Square	2.428 <sup>a</sup>	1	.119		
Continuity Correction <sup>b</sup>	1.841	1	.175		
Likelihood Ratio	2.438	1	.118		
Fisher's Exact Test				.159	.087
Linear-by-Linear Association	2.406	1	.121		
N of Valid Cases	106				

a. 0 cells (.0%) have expected count less than 5. The minimum expected count is 19.13.

b. Computed only for a 2x2 table



**Risk Estimate**

	Value	95% Confidence Interval	
		Lower	Upper
Odds Ratio for Umur (>43 tahun / <43 tahun)	1.884	.846	4.194
For cohort Kelengkapan_resume = lengkap	1.262	.937	1.699
For cohort Kelengkapan_resume = tidak lengkap	.670	.401	1.118
N of Valid Cases	106		

**9. Bivariat Jenis Keahlian**

**Crosstabs**

**Case Processing Summary**

	Cases					
	Valid		Missing		Total	
	N	Percent	N	Percent	N	Percent
jenis_keahlian * kelengkapan_resume	106	100.0%	0	.0%	106	100.0%

**jenis\_keahlian \* kelengkapan\_resume Crosstabulation**

			kelengkapan_resume		Total
			lengkap	tidak lengkap	
jenis_keahlian	spesialis	Count	54	16	70
		% within jenis_keahlian	77.1%	22.9%	100.0%
	umum	Count	13	23	36
		% within jenis_keahlian	36.1%	63.9%	100.0%
Total		Count	67	39	106
		% within jenis_keahlian	63.2%	36.8%	100.0%

### Chi-Square Tests

	Value	df	Asymp. Sig. (2-sided)	Exact Sig. (2-sided)	Exact Sig. (1-sided)
Pearson Chi-Square	17.211 <sup>a</sup>	1	.000		
Continuity Correction <sup>b</sup>	15.492	1	.000		
Likelihood Ratio	17.114	1	.000		
Fisher's Exact Test				.000	.000
Linear-by-Linear Association	17.049	1	.000		
N of Valid Cases	106				

a. 0 cells (.0%) have expected count less than 5. The minimum expected count is 13.25.

b. Computed only for a 2x2 table

### Risk Estimate

	Value	95% Confidence Interval	
		Lower	Upper
Odds Ratio for jenis_keahlian (spesialis / umum)	5.971	2.478	14.391
For cohort kelengkapan_resume = lengkap	2.136	1.358	3.360
For cohort kelengkapan_resume = tidak lengkap	.358	.218	.587
N of Valid Cases	106		

## 10. Bivariat Masa Kerja

### Crosstabs

[DataSet1] D:\TUTUT\masakerja.sav

### Case Processing Summary

	Cases					
	Valid		Missing		Total	
	N	Percent	N	Percent	N	Percent
masa_kerja * kelengkapan_resume	106	100.0%	0	.0%	106	100.0%

**masa\_kerja \* kelengkapan\_resume Crosstabulation**

		kelengkapan_resume		Total
		lengkap	Tidak lengkap	
masa_kerja > 3 tahun	Count	49	15	64
	% within masa_kerja	76.6%	23.4%	100.0%
< 3 tahun	Count	18	24	42
	% within masa_kerja	42.9%	57.1%	100.0%
Total	Count	67	39	106
	% within masa_kerja	63.2%	36.8%	100.0%

**Chi-Square Tests**

	Value	df	Asymp. Sig. (2-sided)	Exact Sig. (2-sided)	Exact Sig. (1-sided)
Pearson Chi-Square	12.388 <sup>a</sup>	1	.000		
Continuity Correction <sup>b</sup>	10.981	1	.001		
Likelihood Ratio	12.401	1	.000		
Fisher's Exact Test				.001	.000
Linear-by-Linear Association	12.271	1	.000		
N of Valid Cases	106				

a. 0 cells (.0%) have expected count less than 5. The minimum expected count is 15.45.

b. Computed only for a 2x2 table

**Risk Estimate**

	Value	95% Confidence Interval	
		Lower	Upper
Odds Ratio for masa_kerja (> 3 tahun / < 3 tahun)	4.356	1.878	10.103
For cohort kelengkapan_resume = lengkap	1.786	1.228	2.598
For cohort kelengkapan_resume = Tidak lengkap	.410	.245	.686
N of Valid Cases	106		

FREQUENCIES VARIABLES=masa\_kerja /HISTOGRAM /ORDER=ANALYSIS.

## 11. Bivariat Status Kepegawaian

### Crosstabs

[DataSet1] D:\TUTUT\status kepegawaian.sav

#### Case Processing Summary

	Cases					
	Valid		Missing		Total	
	N	Percent	N	Percent	N	Percent
status_kepegawaian * kelengkapan_resume	106	100.0%	0	.0%	106	100.0%

#### status\_kepegawaian \* kelengkapan\_resume Crosstabulation

			kelengkapan_resume	
			lengkap	tidak lengkap
status_kepegawaian	pns/peg tetap	Count	47	17
		% within status_kepegawaian	73.4%	26.6%
	peg. tidak tetap	Count	20	22
		% within status_kepegawaian	47.6%	52.4%
Total		Count	67	39
		% within status_kepegawaian	63.2%	36.8%

#### status\_kepegawaian \* kelengkapan\_resume Crosstabulation

			Total
status_kepegawaian	pns/peg tetap	Count	64
		% within status_kepegawaian	100.0%
	peg. tidak tetap	Count	42
		% within status_kepegawaian	100.0%
Total		Count	106
		% within status_kepegawaian	100.0%

**Chi-Square Tests**

	Value	df	Asymp. Sig. (2-sided)	Exact Sig. (2-sided)	Exact Sig. (1-sided)
Pearson Chi-Square	7.269 <sup>a</sup>	1	.007		
Continuity Correction <sup>b</sup>	6.201	1	.013		
Likelihood Ratio	7.239	1	.007		
Fisher's Exact Test				.008	.006
Linear-by-Linear Association	7.200	1	.007		
N of Valid Cases	106				

a. 0 cells (.0%) have expected count less than 5. The minimum expected count is 15.45.

b. Computed only for a 2x2 table

**Risk Estimate**

	Value	95% Confidence Interval	
		Lower	Upper
Odds Ratio for status_kepegawaian (pns/peg tetap / peg. tidak tetap)	3.041	1.338	6.913
For cohort kelengkapan_resume = lengkap	1.542	1.087	2.188
For cohort kelengkapan_resume = tidak lengkap	.507	.308	.835
N of Valid Cases	106		